

ASM300 Configuration Synchronization Tool Setting Manual

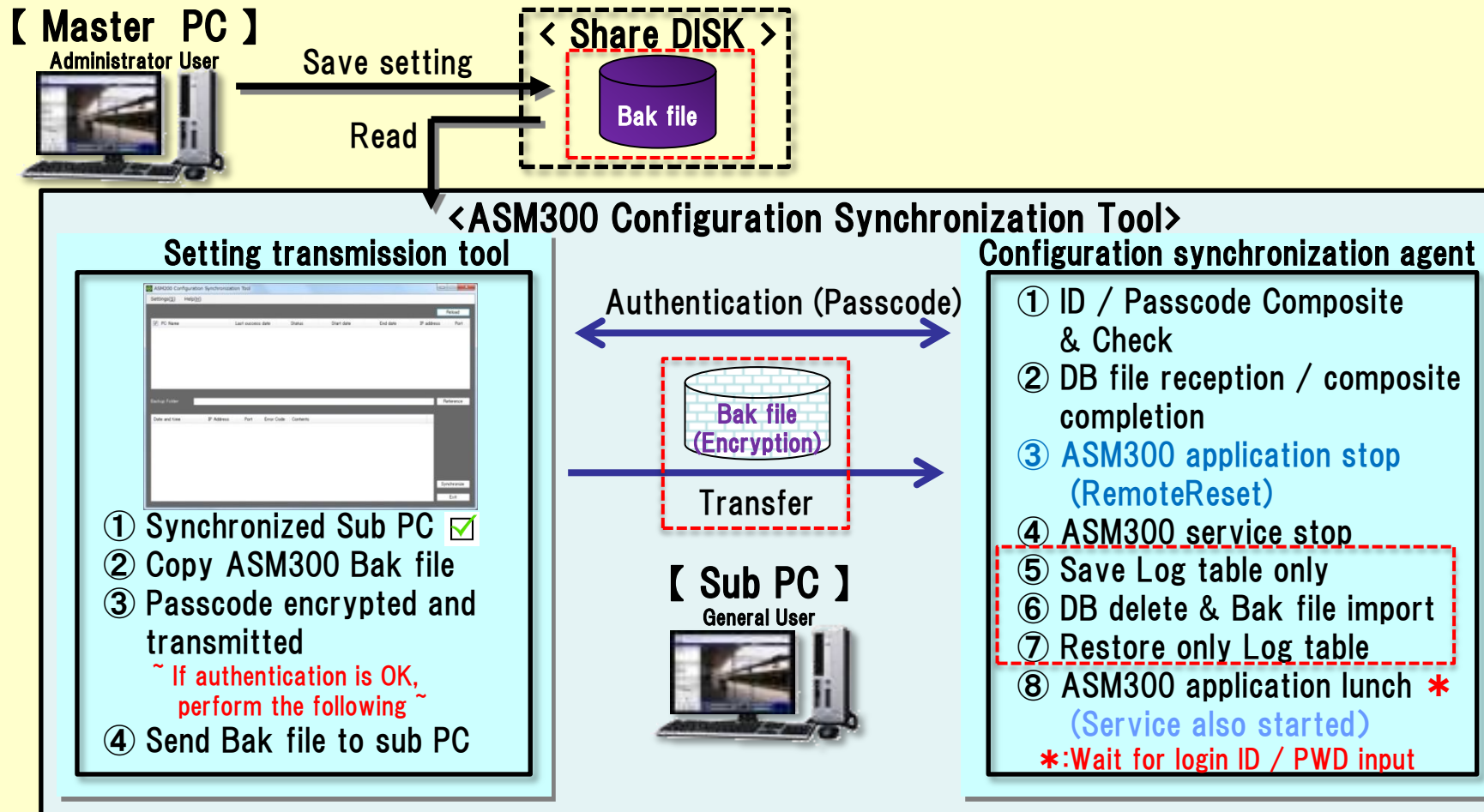
Ver. 1.0.0.1

Panasonic Corporation
Connected Solutions Company
Security System Business Division

ASM300 Configuration Synchronization Tool Evaluation

(Operation : Pull type synchronization)

Basic policy: following the operability / design of the ASM200 setting synchronization tool.
In addition, as a security enhancement, in order to transfer setting saved data (BAK file) safely, pre-transfer authentication processing and encrypted transmission are added.



< Restrictions >

- Installation / uninstallation is performed manually according to the procedure manual. (⇔ Same as ASM200 Configuration Synchronization Tool)
- When the ASM300 application is restarted after synchronization, it will go to the login screen. (Please log in manually.)

Installation

ASM300 Configuration Synchronization Tool

Installation < Sub PC > (1/2)

■ Introduction

- Make sure that ASM300 Ver1.37 or higher is installed and license registered.
 - Especially when the sub PC side is DEMO version, ASM300 will not operate correctly after setting synchronization.

■ Configuration Synchronization Tool : Preparing for installation

【1】 A set of installation files

- Please copy “ASM300ConfigSyncTool_v1.0.0.1.zip” to an arbitrary folder.

【2】 Unzip installation file

- Please unzip “ASM300ConfigSyncTool_v1.0.0.1.zip” under the “C:¥1.0.0.1” folder.
The following folder / files are unzipped under “C:¥ 1.0.0.1” folder.

- ☐ InstallFiles (Folder)
- ☐ install_sync.bat
- ☐ install_agent.bat

From this, it is assumed that you work under the folder “C: ¥ 1.0.0.1”.

ASM300 Configuration Synchronization Tool

Installation < Sub PC > (2/2)

■ Configuration Synchronization Tool : Install by administrator user

【1】 Installation

1. Execute “install_sync.bat” by administrator under “C: ¥ 1.0.0.1” folder.
2. The following files are copied under “C:¥Program Files¥Panasonic¥ASM300_Sync” folder.
 - ☐ ASM300_DataSend.log
 - ☐ ASM300_SubPC.xml
 - ☐ ASM300_Sync.xml
 - ☐ ASM300sync.exe
 - ☐ ASM300sync.exe.config
 - ☐ Language.csv

【2】 Make sure that a shortcut for the “ASM300sync.exe” file is created on the desktop.



※ Installation notes

When “C:¥Users¥”user name”¥AppData¥Local¥VirtualStore¥Program Files¥Panasonic¥ASM300_Sync“ folder exists at the time of installation, please delete it.

(In case of Windows7 64bit version, “Program Files (x86)”.)

ASM300 Configuration Synchronization Agent

Installation < Sub PC > (1/3)

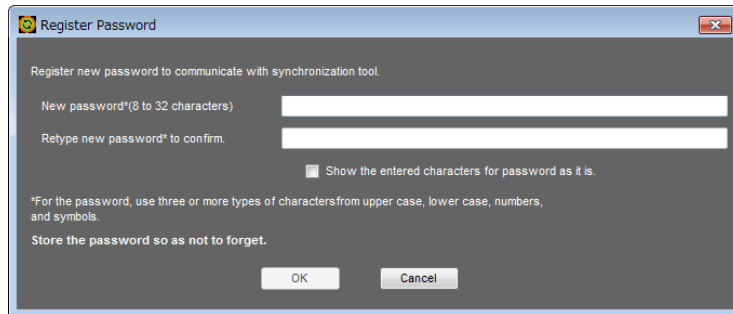
■ Configuration Synchronization Agent : Install by administrator user

【1】 Installation

1. Execute “install_sync.bat” by administrator under “C: ¥ 1.0.0.1” folder.
2. The following files are copied under “C:¥Program Files¥Panasonic¥asm300” folder.
 - ☐ ASDBupdate.dll
 - ☐ ASDBUpdateLib.dll
 - ☐ ASM300agent.exe
 - ☐ ASM300agent.exe.config
 - ☐ ASM300agent.vbs
 - ☐ Language.csv
 - ☐ LoadDBExec.exe
2. The following files are copied under “C:¥Program Files¥Panasonic¥ASM300_Agent” folder.
 - ☐ ASM300_Agent.xml
 - ☐ ASM300_DataRecv.log

ASM300 Configuration Synchronization Agent Installation < Sub PC > (2/3)

【2】 The [Register Password] screen page is displayed.



1. Please enter the password to be registered in [New password] and [Retype new password] and click [OK] button.

*For the password, use three or more types of characters from upper case, lower case, numbers, and symbols.

*The password is used for authentication from [Configuration Synchronization Tool].
Please also set the same password in [Configuration Synchronization Tool].

【3】 Configuration synchronization agent icon appears in the notification area.



If it does not appear, change the task tray display settings should be set to "Show icon and notifications".

ASM300 Configuration Synchronization Agent Installation < Sub PC > (3/3)

※ Attention at the time of the installation

When “C:¥Users¥”user name”¥AppData¥Local¥VirtualStore¥Program Files¥Panasonic¥ASM300_Sync” folder exists at the time of installation, please delete.

When “C:¥Users¥”user name”¥AppData¥Local¥VirtualStore¥Program Files¥Panasonic¥ASM300_Agent” folder exists at the time of installation, please delete.

(In case of Windows 64bit version, “Program Files (x86)”.)

Uninstallation

ASM300 Configuration Synchronization Tool

Uninstallation < Sub PC >

■ Configuration Synchronization Tool : Uninstallation

【1】 Deletion of the files which you installed

Please delete the “C:\Program Files\Panasonic\ASM300_Sync” folder containing the following files.

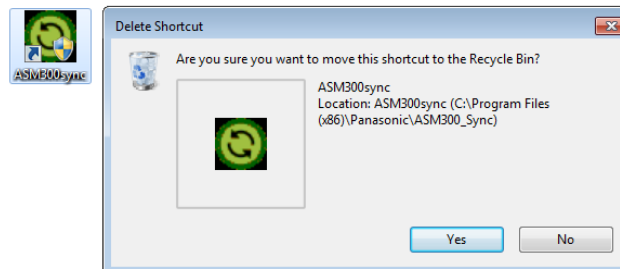
- ☐ [ASM300_DataSend.log](#)
- ☐ [ASM300_SubPC.xml](#)
- ☐ [ASM300_Sync.xml](#)
- ☐ [ASM300sync.exe](#)
- ☐ [ASM300sync.exe.config](#)
- ☐ [Language.csv](#)

※ Attention: Do not delete files other than the above mentioned target files.

【1】 Deletion of the shortcut

1. Please single-click the ASM300sync short-cut on the desktop and press [Delete] key.

2. Please click [Yes] button.



ASM300 Configuration Synchronization Agent Uninstallation < Sub PC > (1/2)

■ Configuration Synchronization Agent : Uninstallation

【1】 Please start a stop task manager of a program starting after login automatically in an administrator rights user and choose “ASM300agent.exe” displayed by a process.

Please stop a program by “end button pressing of the process” afterwards

【2】 Deletion of the files / folder which you installed

1. Please delete the following files under “C:¥Program Files¥Panasonic¥asm300” folder.

- ☐ ASDBupdate.dll
- ☐ ASDBUpdateLib.dll
- ☐ ASM300agent.exe
- ☐ ASM300agent.exe.config
- ☐ ASM300agent.vbs
- ☐ Language.csv
- ☐ LoadDBExec.exe

2. Please delete the “C:¥Program Files¥Panasonic¥ASM300_Agent” folder containing the following files and folder.

- ☐ ASM300_Agent.xml
- ☐ ASM300_DataRecv.log

※ Attention: Do not delete files or folders other than the above mentioned target files or folder.

ASM300 Configuration Synchronization Agent Uninstallation < Sub PC > (2/2)

【3】 Deletion of the task that I set to a task scheduler

Please choose ASM300agent displayed by a task scheduler library of the task scheduler, and delete it from an operation menu.

Boot-up termination

ASM300 Configuration Synchronization Tool

Boot-up termination < Sub PC > (1/3)

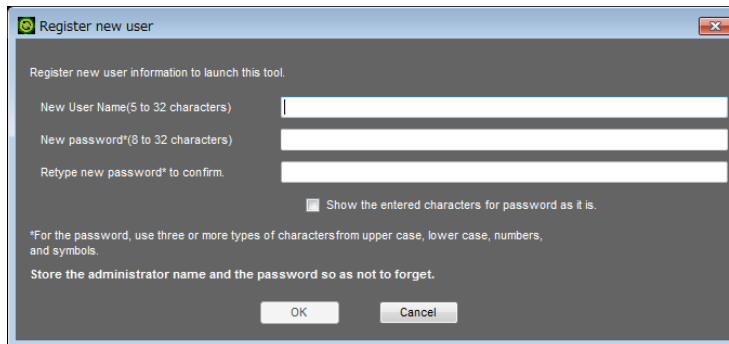
■ Boot-up ASM300 Configuration backup tool



【1】 Please log-in to a standard user of Windows7.

【2】 Please click the ASM300sync shot-cut on desktop.

【3】 The [Register new user] screen page is displayed. (First time only)



1. Please enter [New User Name].

2. Please enter the password to be registered in [New password] and [Retype new password] and click [OK] button.

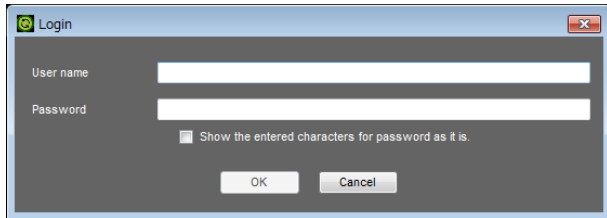
*For the password, use three or more types of characters from upper case, lower case, numbers, and symbols.

*The password is used for authentication to the [Configuration Synchronization Agent].
Please also set the same password in [Configuration Synchronization Agent].

ASM300 Configuration Synchronization Tool

Boot-up termination < Sub PC > (2/3)

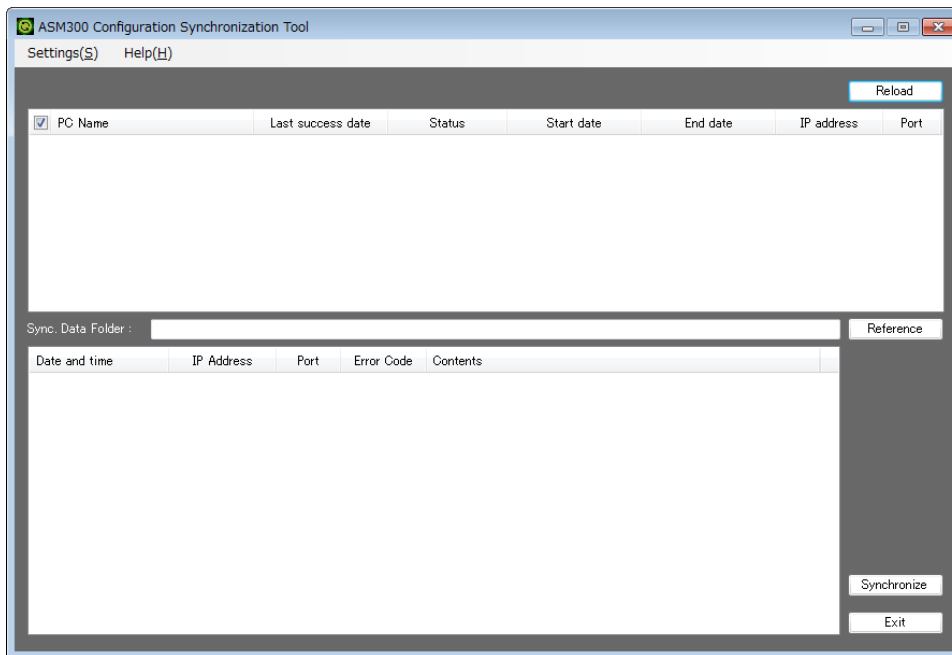
【4】 The [Login] screen page is displayed.



A small login dialog box titled "Login". It contains two input fields: "User name" and "Password". Below the password field is a checkbox labeled "Show the entered characters for password as it is." At the bottom are "OK" and "Cancel" buttons.

1. Please enter [User Name] and [Password] and click [OK] button.

【5】 The [ASM300 Configuration Synchronization Tool] screen page is displayed.



The main window of the "ASM300 Configuration Synchronization Tool". It has a menu bar with "Settings(S)" and "Help(H)". Below the menu bar is a "Reload" button. A table with the following columns is displayed:

<input checked="" type="checkbox"/> PC Name	Last success date	Status	Start date	End date	IP address	Port
---	-------------------	--------	------------	----------	------------	------

 Below the table is a "Sync. Data Folder :" label and a text input field. To the right of the input field is a "Reference" button. Below the input field is another table:

Date and time	IP Address	Port	Error Code	Contents
---------------	------------	------	------------	----------

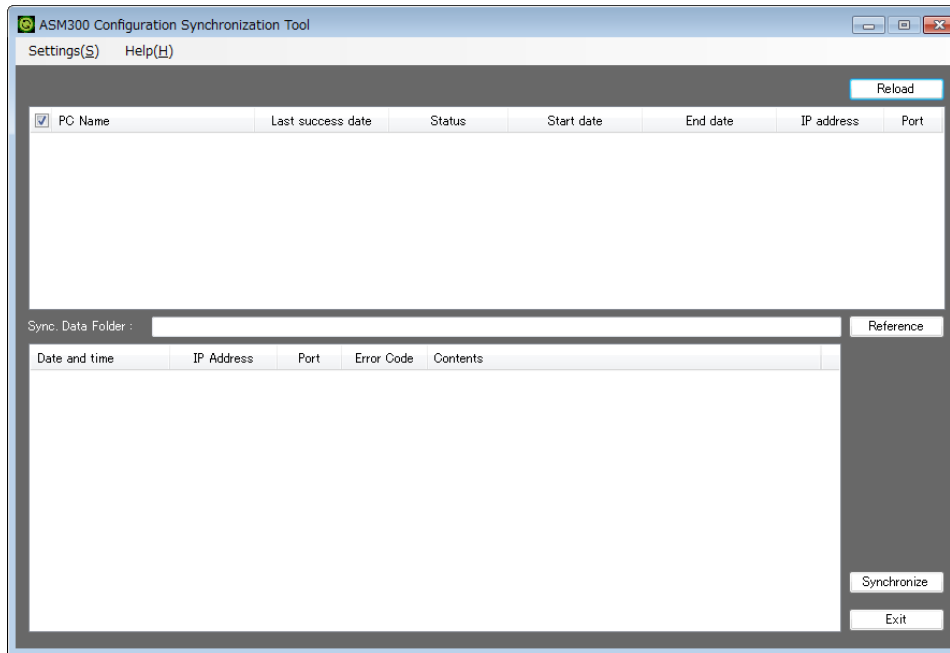
 At the bottom right are "Synchronize" and "Exit" buttons.

ASM300 Configuration Synchronization Tool

Boot-up termination < Sub PC > (3/3)

■ Termination ASM300 Configuration Synchronization Tool

【1】 Please click the [Exit] or [x] button on the [ASM300 Configuration Synchronization Tool] page.



* When you re-booting, and then click short cut [ASM300sync] of the desktop

Setup

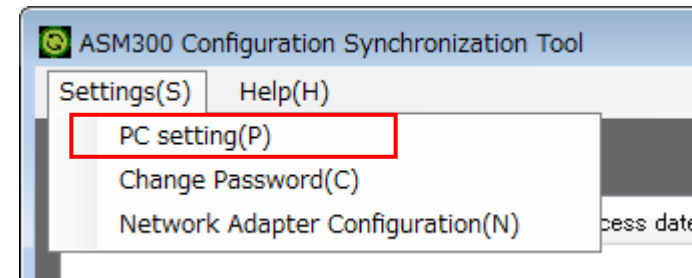
ASM300 Configuration Synchronization Tool

Setup < Sub PC > (1/5)

■ Setup ASM300 Configuration Synchronization Tool : PC Setting

Below, for the PC of the synchronization destination to be registered, it means all sub PCs.

- 【1】 Please click [PC setting(P)] on the [Settings(S)] menu.
The [PC Setting] screen page is displayed.



ASM300 Configuration Synchronization Tool

Setup < Sub PC > (2/5)

- 【2】** Please enter (1) PC name, (2) IP address (3) port number of the own PC which you confirmed in advance and then click [Add] button. After that add PC information display. Please set (3) port number to “50000” as default setting. When you change PC information or you delete it, please click [Change] or [Delete] button after choice with a target PC by a list.

The image shows two screenshots of the 'PC Setting' dialog box. The top screenshot shows the input fields for PC Name, IP address, and Port, with red boxes and numbers (1), (2), and (3) indicating the required information. The bottom screenshot shows the resulting list of PC information, with a red box highlighting the added entry.

PC Setting

PC Name	IP address	Port
PC#1	192.168.0.101	50000

PC Information

PC Name : PC#1

IP address : 192.168.0.101

Port : 50000

Add Change Delete

Save Cancel

PC Setting

PC Name	IP address	Port
PC#1	192.168.0.101	50000

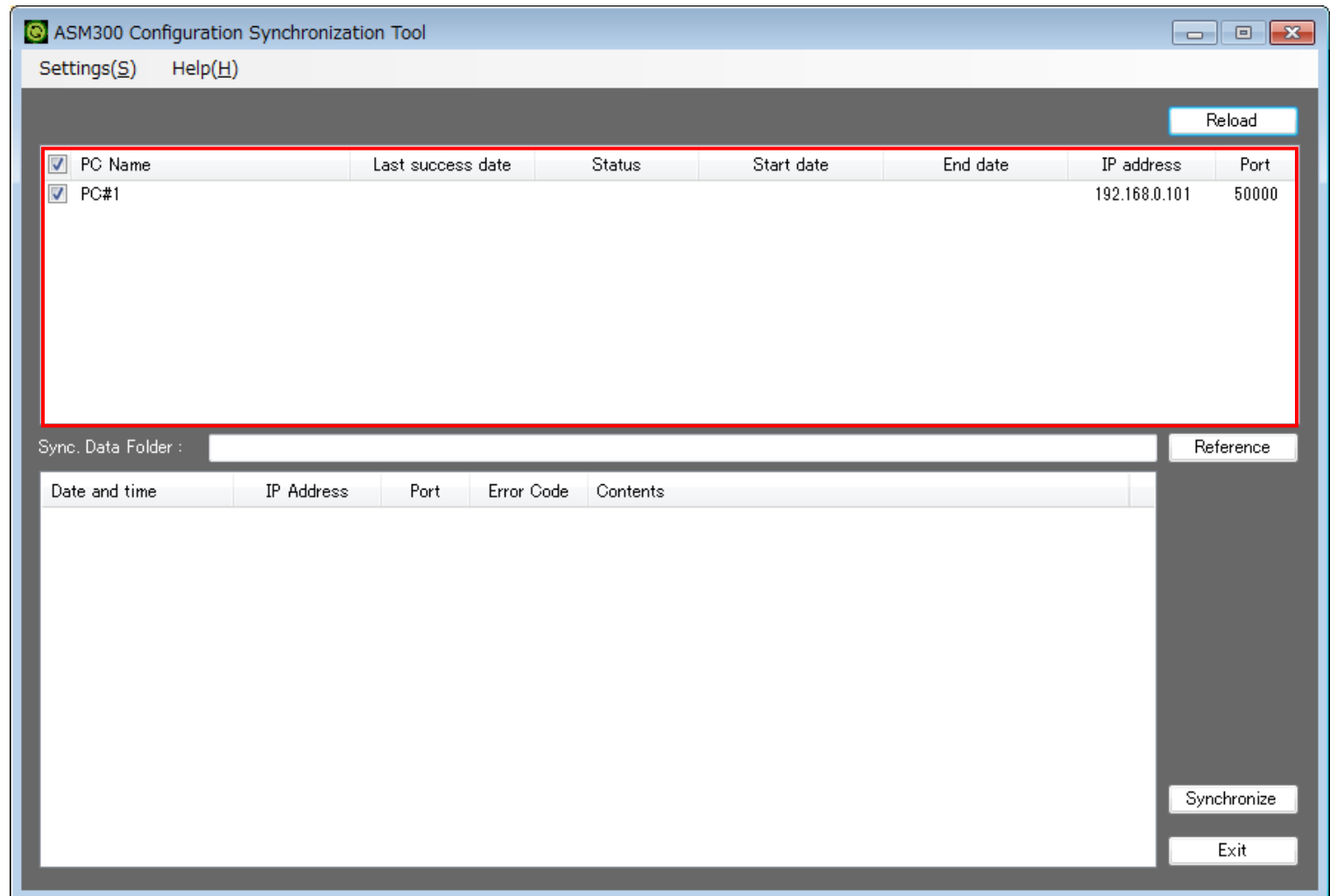
***Note:** Please enter the IP address of the network adapter used by “ASM300 Configuration Synchronization Agent” into “(2) IP Address”.

ASM300 Configuration Synchronization Tool

Setup < Sub PC > (3/5)

【3】 Please confirm PC configuration, and click [Save] button if it is OK.

[PC Setting] screen is closed and is reflected in the PC information indication area.



【4】 Please click a [Exit] or [x] button, and close the screen.

ASM300 Configuration Synchronization Tool

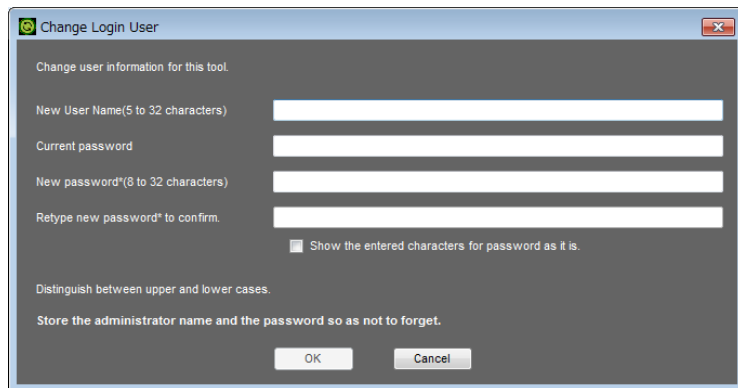
Setup < Sub PC > (4/5)

■ Setup ASM300 Configuration Synchronization Tool : User Name / Password change

You can change the User Name / Password set during installation.

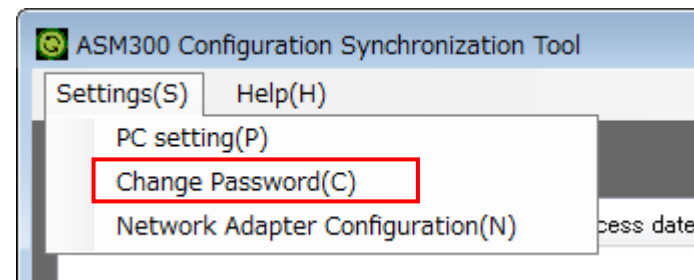
- 【1】** Please click [Change Password (C)] on the [Settings (S)] menu.
The [Change Login User] screen page is displayed.

- 【2】** Please enter [New User Name].



The 'Change Login User' dialog box is shown. It contains the following fields and options:

- Change user information for this tool.
- New User Name(5 to 32 characters): [Text input field]
- Current password: [Text input field]
- New password*(6 to 32 characters): [Text input field]
- Retype new password* to confirm: [Text input field]
- ☐ Show the entered characters for password as it is.
- Distinguish between upper and lower cases.
- Store the administrator name and the password so as not to forget.
- OK button
- Cancel button



- 【3】** Please enter the password to be registered in [New password] and [Retype new password] and click [OK] button.

*For the password, use three or more types of characters from upper case, lower case, numbers, and symbols.

*The password is used for authentication to the [Configuration Synchronization Agent].
Please also set the same password in [Configuration Synchronization Agent].

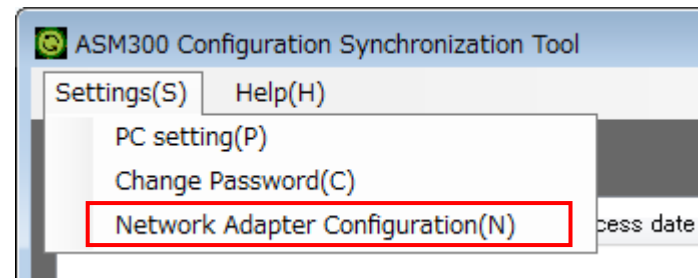
ASM300 Configuration Synchronization Tool

Setup < Sub PC > (5/5)

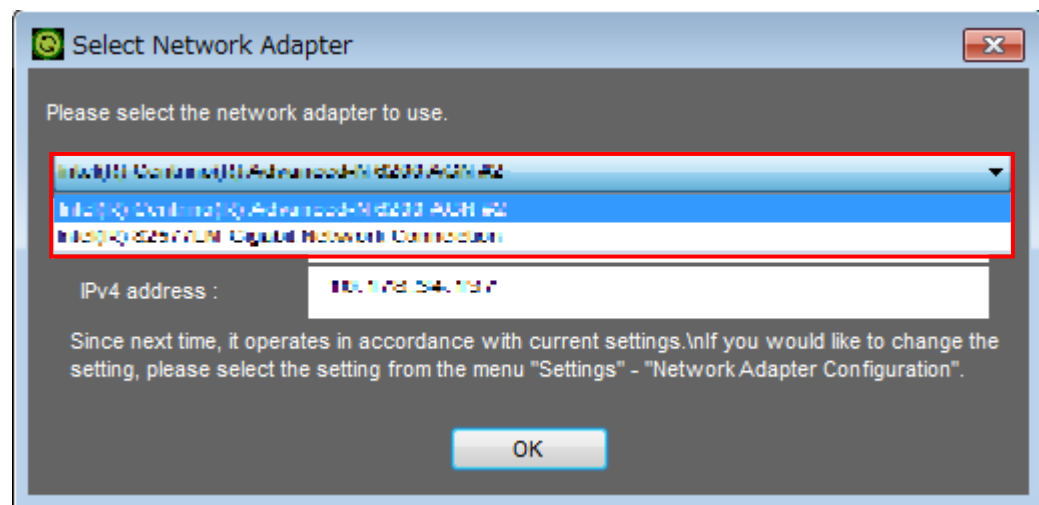
■ Setup ASM300 Configuration Synchronization Tool : Net Work Adapter Configuration

If there are multiple network adapters, select what to use.

- 【1】 Please click [Network Adapter Configuration (N)] on the [Settings (S)] menu.
The [Select Network Adapter] screen page is displayed.



- 【2】 Please select the network adapter to use.



- 【3】 Please click a [OK] button.

ASM300 Configuration Synchronization Agent

Setup < Sub PC > (1/4)

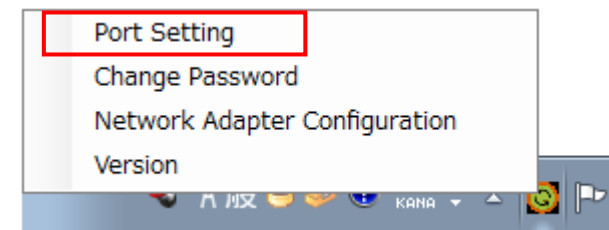
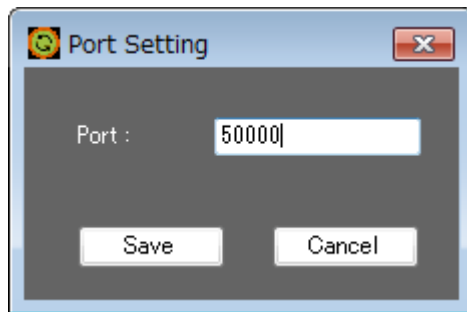
■ Setup ASM300 Configuration Synchronization Agent : Port Setting

If you set the port number other than 50000 (default) in “ASM300 Configuration Synchronization Tool Setting: PC Setting” Procedure [2], set the same port number. If you keep the 50000 (default) port number, the this procedure is unnecessary.

【1】 Right-click the [ASM300agent] icon that is displayed in the task tray, select the [Port Setting].

The “Port Setting” screen page is displayed.

【2】 Please enter the value that you set in the ASM300 Configuration Synchronization Tool.



【3】 Click [Save] button to execute change of port number.

ASM300 Configuration Synchronization Agent

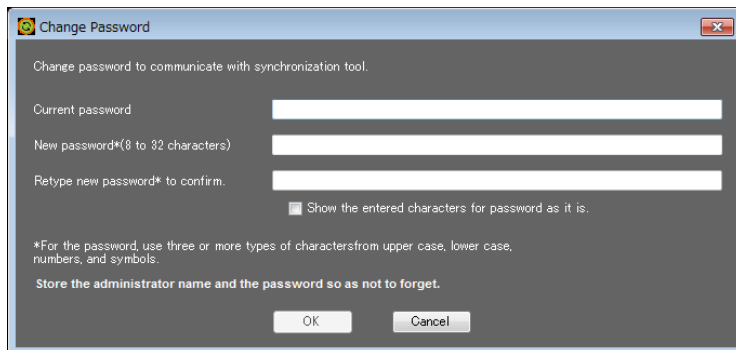
Setup < Sub PC > (2/4)

■ Setup ASM300 Configuration Synchronization Agent: Change password

You can change the password set during installation.

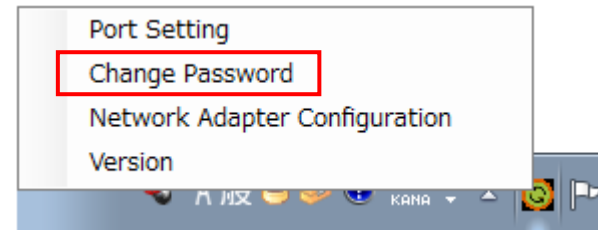
- 【1】** Right-click the [ASM300agent] icon that is displayed in the task tray,
select the [Change password].
The [Change Password] screen page is displayed.

- 【2】** Please enter the [Current password].



The screenshot shows a 'Change Password' dialog box with the following fields and options:

- Current password: [Text input field]
- New password*(8 to 32 characters): [Text input field]
- Retype new password* to confirm: [Text input field]
- ☐ Show the entered characters for password as it is.
- *For the password, use three or more types of characters from upper case, lower case, numbers, and symbols.
- Store the administrator name and the password so as not to forget.
- Buttons: OK, Cancel



- 【3】** Please enter the password to [New password] and [Retype new password]
and click [OK] button.

*For the password, use three or more types of characters from upper case, lower case, numbers, and symbols.

*The password is used for authentication from [Configuration Synchronization Tool].
Please also set the same password in [Configuration Synchronization Tool].

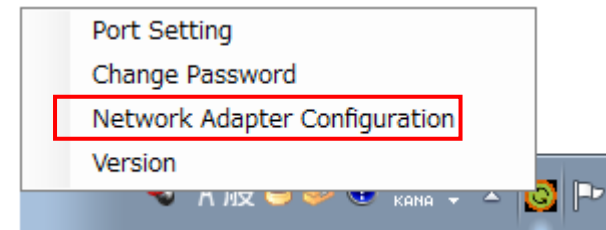
ASM300 Configuration Synchronization Agent

Setup < Sub PC > (3/4)

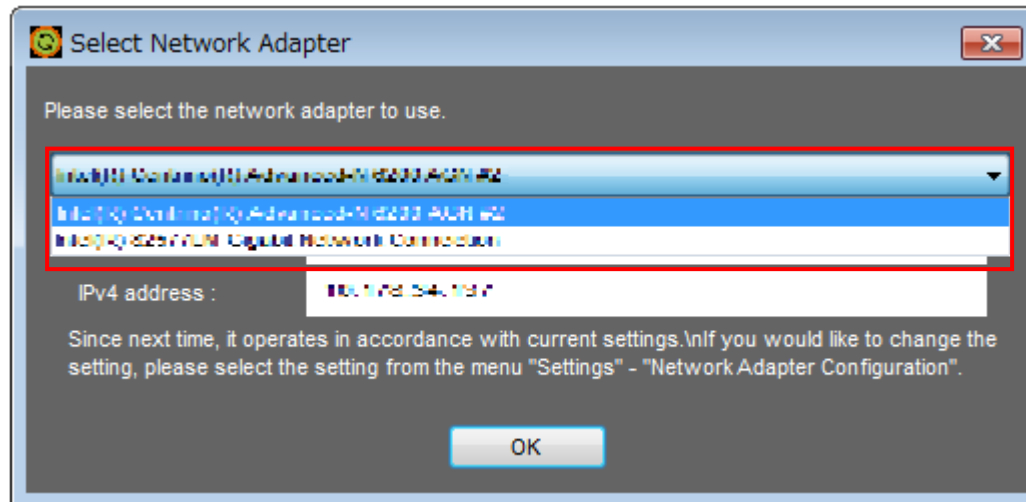
■ Setup ASM300 Configuration Synchronization Agent: Network Adapter Configuration

If there are multiple network adapters, select what to use.

- 【1】 Right-click the [ASM300agent] icon that is displayed in the task tray,
select the [Network Adapter Configuration].
The “Network Adapter” screen page is displayed.



- 【2】 Please select the network adapter to use.



- 【3】 Please click a [OK] button.

ASM300 Configuration Synchronization Agent

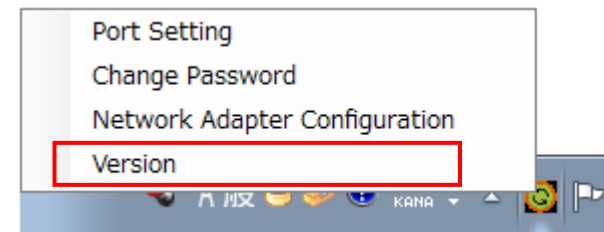
Setup < Sub PC > (4/4)

■ Setup ASM300 Configuration Synchronizations Agent: Version

You can check the version.

【1】 Right-click the [ASM300agent] icon that is displayed in the task tray,
select the [Version].

The [Version] screen page is displayed.



【2】 Please click a [OK] button.

Operation

ASM300 Configuration Synchronization Tool

Operation < Sub PC > (1/5)

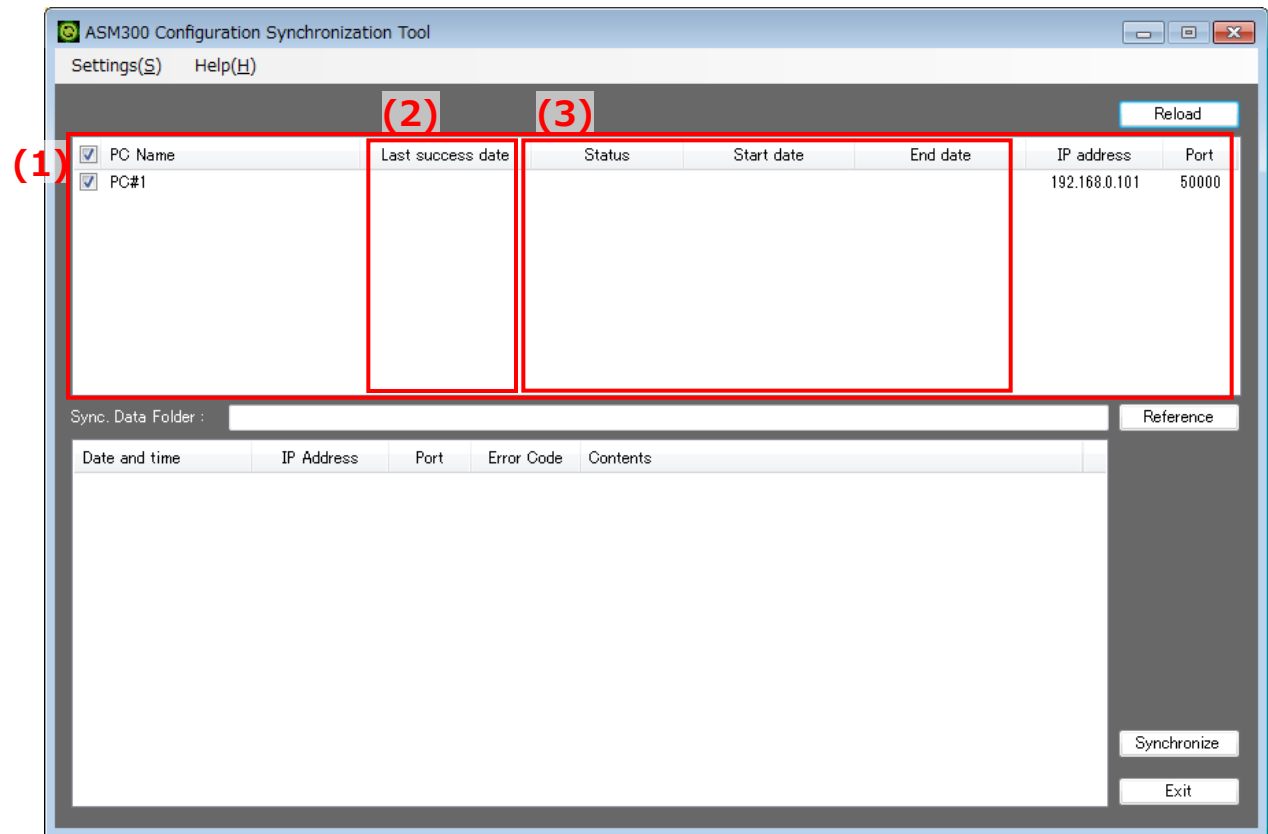
■ The latest status indication of the Sub PC

【1】 Click the [Reload] button.

The latest status indication of the SubPC on PC information display area (1).

-Last success date (2)

-Current synchronization status ((3):"SubPC status" "start/finish date")

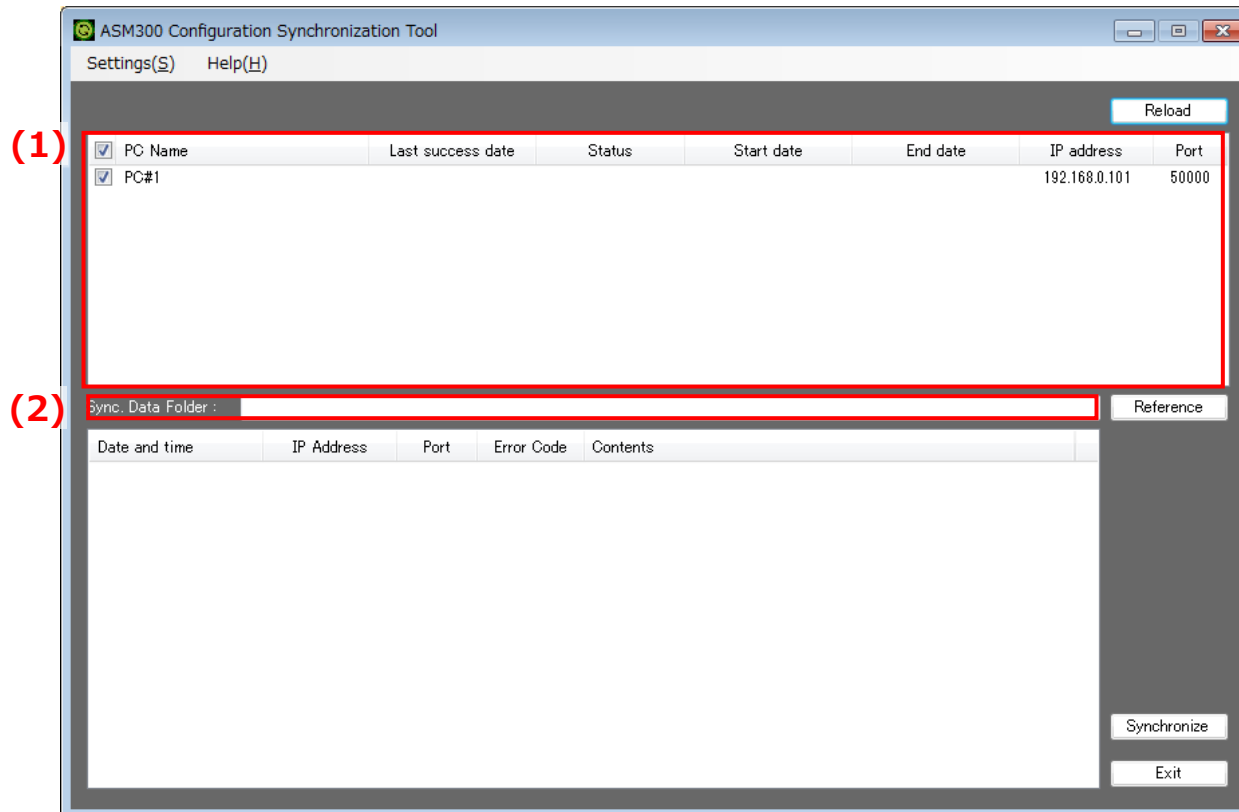


ASM300 Configuration Synchronization Tool

Operation < Sub PC > (2/5)

■ ASM300 Configuration Synchronization

- 【1】 Please change to check box “On” ☒ of target PC on PC information display area (1).
- 【2】 Please click [Reference] button,
and please select the folder (2) where the settings backup file (Setupdata_xxx.bak) of ASM300 is stored.

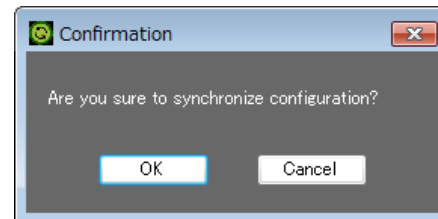


ASM300 Configuration Synchronization Tool

Operation < Sub PC > (3/5)

【3】 Please click [Synchronize] button.

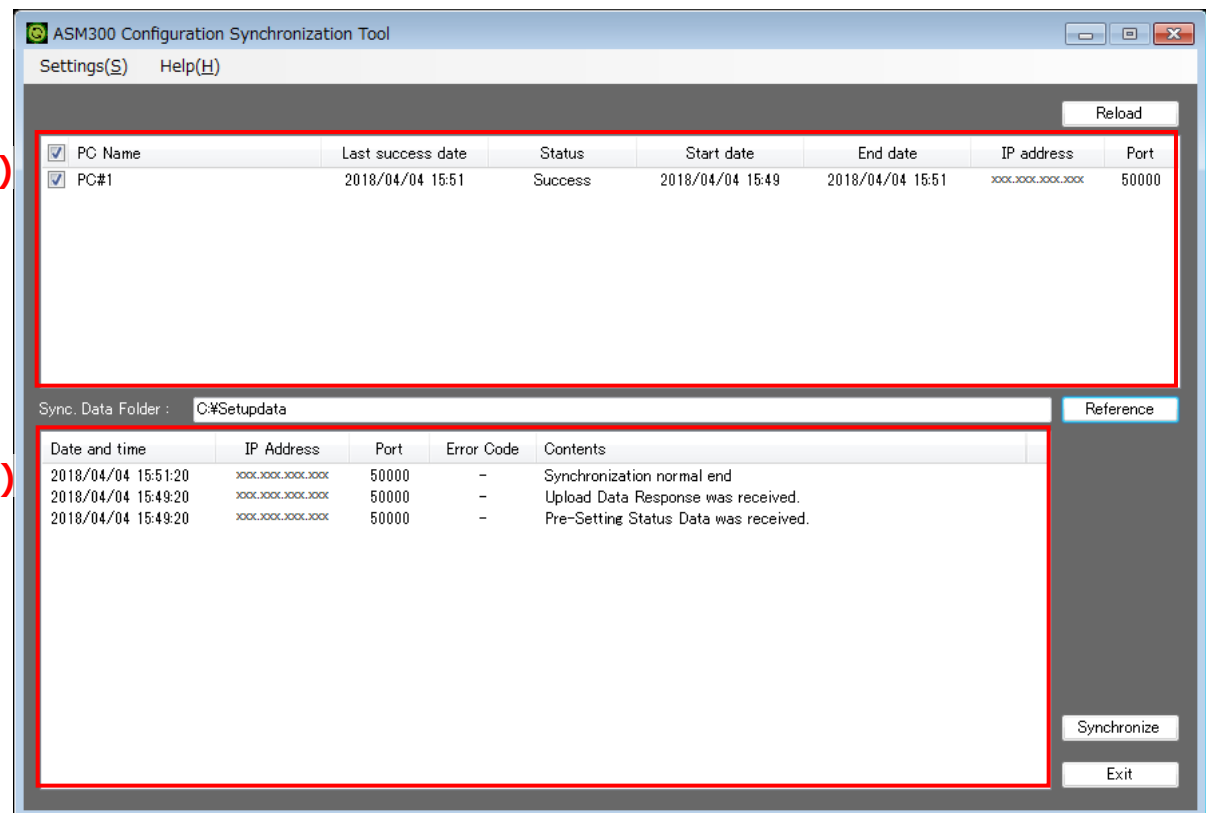
【4】 Please click [OK] button.



Display processing result (Success/Failure) on PC information display (1) area and log display area (3).

* “ Success “ may not have a processing result by a timing. In this case please click [Reload] button. (1)

(3)



ASM300 Configuration Synchronization Tool

Operation < Sub PC > (4/5)

■ Error cause and coping process

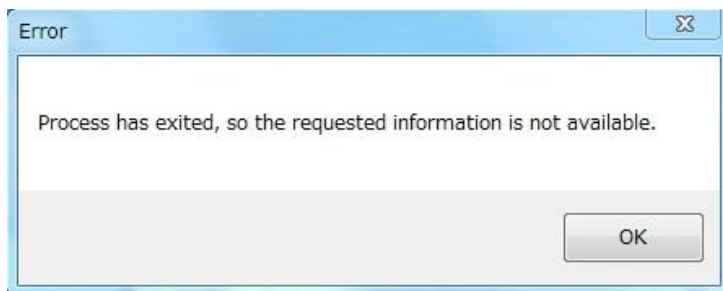
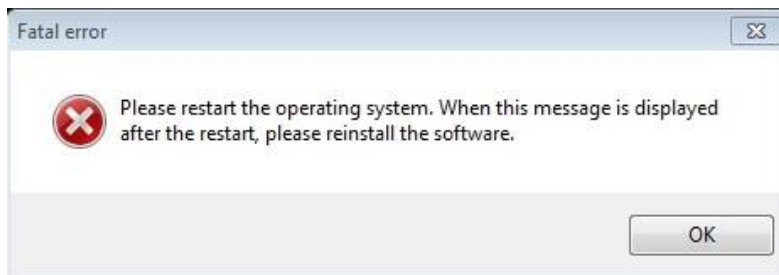
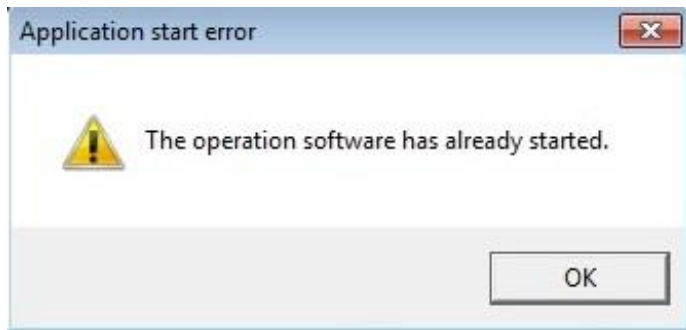
Error Code	Cause	Solution
5002	・ASM300 Operation app stop : failed	・Stop the ASM300 operation app manually. ・carry out synchronization use ASM300 Configuration Synchronization.
5005	・update setup data (bak) : Successful ・Boot up ASM203 operation app : failed	・Boot up ASM300 operation app.
5007	・during boot up ASM300 setup app	・Close the [Settings] tab of the ASM 300 app or stop the ASM 300 app. ・Carry out synchronization use ASM300 Configuration Synchronization again.
5009	・update setup data (bak) : failed ・boot up ASM300 operation app : failed	・Carry out synchronization use ASM300 Configuration Synchronization
5010	・update setup data (bak) : failed ・boot up ASM300 operation app : Successful	・Carry out synchronization use ASM300 Configuration Synchronization
5016	・Authentication to Configuration Synchronization Agent: failed	・Set the same password for the [Configuration Synchronization Tool] and [Configuration Synchronization Agent].

ASM300 Configuration Synchronization Tool

Operation < Sub PC > (5/5)

■ Precaution statement

In case of the following error message is displayed of the ASM300 use application of the subPC automatically after the configuration synchronization, click [OK] button and restart ASM300 operation App manually.



Restrictions

■ Restrictions

- ◆ Make sure that ASM300 Ver.1.37 or higher (same Ver) is installed on the master PC and sub PC. Regarding the sub PC in particular, please be sure to register your license. Otherwise the ASM300 will not work properly.
- ◆ The setting contents of the menu [setting] → [system] are not synchronized. So please change the setting manually as necessary.
- ◆ Synchronization of setting is pull type operation. (Synchronization operation from the synchronized side on the sub PC side.)
- ◆ ASM300 application restarts after synchronous processing, but it is up to login screen display
- ◆ Please register the same number of WV-ASE 203 licenses (additional number of recorders) in both master PC and sub PC. If the WV - ASE203 license number of the sub PC is smaller than the master PC, the synchronization fails.
- ◆ If the WV-ASE202 license (multi - screen display) doesn't register in the sub - PC, the live window with the maximum number of areas is limited to 16 or less screens.
- ◆ When operating with [Timeline: On], please confirm that the master PC's [timeline database] is PC with [slave]. After synchronization is completed, the PC whose [Timeline database] is set to [Master] in the sub PC is changed to [Slave], so please reset the [Master].

ASM300 Configuration Synchronization Tool : Restrictions (2/2)

- ◆ This tool does not delete the log file automatically.
When free space of the HDD capacity of the PC is short, please delete the log file.
- ◆ In the case of preservation, some setup data and a log file to manage with this tool do not encrypt it.
I would like management in operative managers on the occasion of the storage of these data as needed.