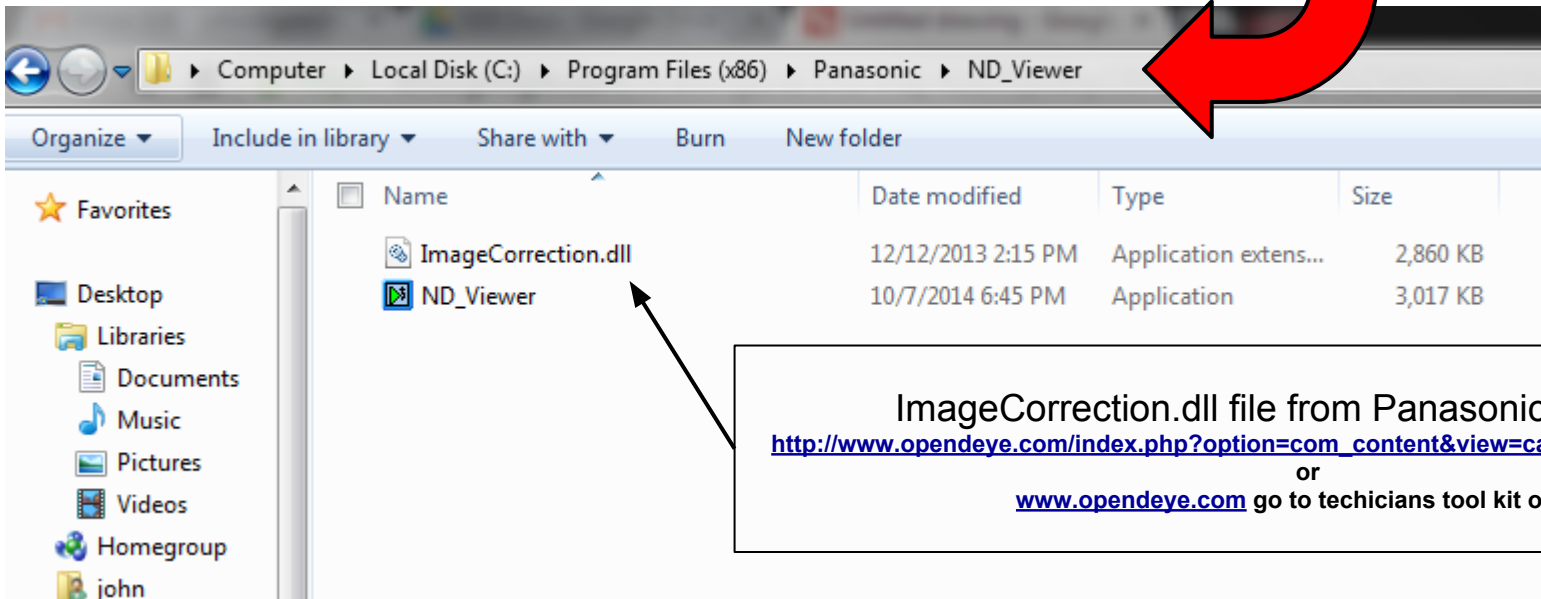
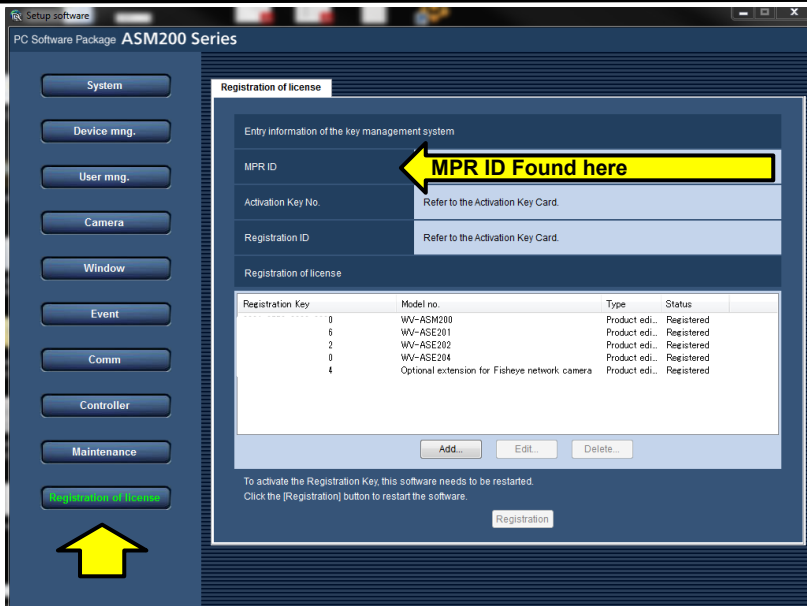


**FOR ND Viewer Playback: Copy dll file to computer/local c drive/ProgramFiles  
(86)  
/Panasonic/ND\_Viewer**



ImageCorrection.dll file from Panasonic link below  
[http://www.opendeye.com/index.php?option=com\\_content&view=category&id=98&Itemid=155](http://www.opendeye.com/index.php?option=com_content&view=category&id=98&Itemid=155)  
or  
[www.opendeye.com](http://www.opendeye.com) go to technicians tool kit on left



## Registering your copy of ASM200 to manipulate 360 camera on ASM200 and/or WJ-NV300

To manipulate 360 on ASM200 software register your MPR. Found in ASM200 setup software under registration of license

Take MPR ID and go to  
<https://kms.business.panasonic.net/ipkms/pc/home.htm>

**ON ASM200 Software**  
Free Activation key: 0401-0065-000A-1234  
Registration ID 2397-55CC  
This along with your MPR number will generate Registration Key for your ASM200 copy

**ON WJ-NV300 Recorder for HDMI monitor out**  
Free Activation key: 1292-0062-030A-1234  
Registration ID 237E-394D  
This along with your MPR number will generate Registration Key for your NV300 recorder