

System Controller WV-CU950 Setup Tool PC Software Package Operating Instructions

Model No. **WV-ASM100**

Before attempting to connect or operate this product,
please read these instructions carefully and save this manual for future use.

■ Preface

This software is installed on a PC to configure the settings of System Controller WV-CU950 relating to network.

■ Installation

1. Insert the supplied CD-ROM into the CD-ROM drive on the PC.
2. Double-click "CU950EtherToolInst.exe" in the "Tool" folder of CD-ROM.
The installation wizard will be displayed on the PC screen.
3. Click "Next", and follow the directions.

Notes:

- It is required that Windows Installer 3.1 is installed on the PC to use this software.
- In the factory default installation, "C:\Program Files\Panasonic\WV-CU950 Setup Tool" is created, and files will be copied to the directory.

■ Uninstallation

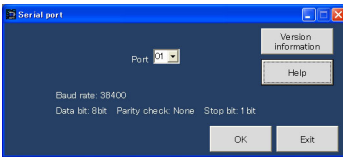
1. Select "Control Panel" - "Add/Remove Programs".
"Add/Remove Programs" window will be displayed on the PC screen.
2. Select "WV-CU950 Setup Tool".
3. Click "Remove", and follow the directions.

Note: If System Controller WV-CU950 Setup Tool has already been installed on a PC, installation is impossible. Install the application again after uninstallation.

■ Starting Up

This software communicates with System Controller WV-CU950 via the RS-232C interface when setting the IP address of system controller or reading out the system controller setting.

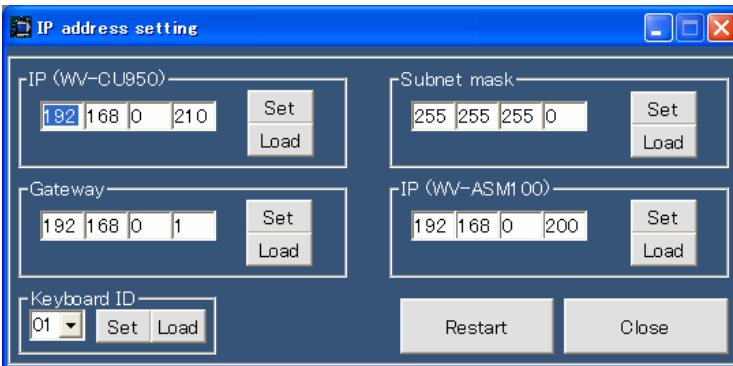
1. Connect the system controller and PC with a 9-pin D-sub cross cable.
2. Select "Start" - "All Programs" - "Panasonic" - "WV-ASM100" - "WV-CU950 Setup Tool" or double-click the "WV-CU950 Setup Tool" icon on the desktop.
System Controller WV-CU950 Setup Tool will start up, and the "Serial port" window will be displayed on the PC screen.



Notes:

- When clicking "Version information", the "Setup Tool" window will appear to display the software version. When clicking "OK", the screen returns to the "Serial port" window.
- When clicking "Help", the "Help" window will appear. When clicking "OK", the screen returns to the "Serial port" window.

3. Select the number for "Port", and click "OK". "IP address setting" window will be displayed.
4. Turn on the power while holding down the button 7 and MON (ESC) button of system controller.
"Admin Password" entry form will appear on the LCD of system controller.
5. Enter the administrator password. (The factory default is "650".) Then, press the SET button. Short buzzer will sound three times, "GXCU-THRU-MODE" will appear on the LCD, and all the buttons in the "IP address setting" window will become available.



Notes:

- When returning from "IP address setting" window to the "Serial port" window, click "Close".
- When such a communication error as cable disconnection happens, "Communication Error" window will appear.
- Refer to the operating instructions of system controller for details on the administrator password.

■ Configure the Settings Relating to Network

Configure and check the settings relating to network in the "IP address setting" window.

Note: When opening this window for the first time, the factory default will be displayed. To check the current settings of system controller, click "Load".

[IP (WV-CU950)]

Enter the IP address of system controller as "nnn.nnn.nnn.nnn".
Available value for "nnn": 0 to 255
Default: 192.168.0.210

[Subnet mask]

Enter the subnet mask of system controller as "nnn.nnn.nnn.nnn".
Available value for "nnn": 0 to 255
Default: 255.255.255.0

[Gateway]

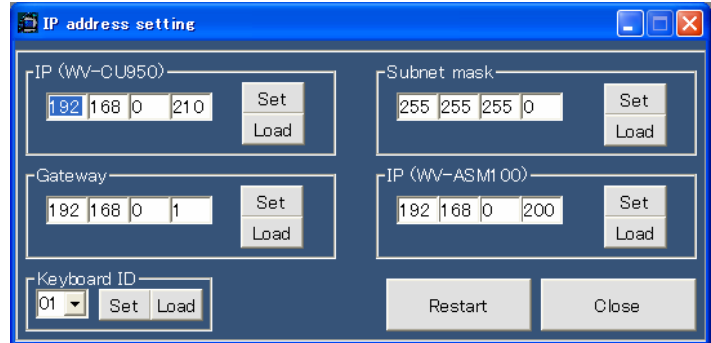
Enter the gateway IP address of system controller as "nnn.nnn.nnn.nnn".
Available value for "nnn": 0 to 255
Default: 192.168.0.1

[IP (WV-ASM100)]

Enter the IP address of PC in which WV-ASM100 is installed.
Available value for "nnn": 0 to 255
Default: 192.168.0.200

[Keyboard ID]

Surely set the number to 01.



[Set] button

Saves the settings in the system controller.

[Load] button

Reads out the settings from the system controller.

When finishing the setup

Restart the system controller in the normal operation mode.

1. Click "Restart" in the "IP address setting" window.
"Connecting to Main CPU..." will appear on the LCD of system controller.
2. Click "Close". "IP address setting" window will disappear, and the screen returns to the "Serial port" window.
3. Click "Exit". You will exit the software.

Notes:

- When a message other than "Connecting to Main CPU..." after the restart, check that the settings of MODE switches and CONTROLLER NO. switch at the rear panel are as follows.
If the settings differ from the illustrations, turn off the system controller, set the switches, and turn on the system controller again. Then, check that "Connecting to Main CPU..." appears on the LCD.



- After all the settings, disconnect the 9-pin D-sub cross cable from the system controller and PC.

For U.S., Canadian and Puerto Rican fields:

Panasonic System Solutions Company,
Unit Company of Panasonic Corporation of North America

Security Systems

<http://www.panasonic.com/security>
For customer support, call 1.877.733.3689

Executive Office: Three Panasonic Way 2H-2, Secaucus, New Jersey 07094

Zone Office

Eastern: Three Panasonic Way, Secaucus, New Jersey 07094

Central: 1707 N. Randal Road, Elgin, IL 60123

Southern: 1225 Northbrook Parkway, Suwanee, GA 30024

Western: 6550 Katella Ave., Cypress, CA 90630

Panasonic Canada Inc.

5770 Ambler Drive, Mississauga,
Ontario, L4W 2T3 Canada (905)624-5010
<http://www.panasonic.ca>

Panasonic Sales Company

Division of Panasonic Puerto Rico Inc.
San Gabriel Industrial Park 65th Infantry Ave. KM. 9.5 Carolina
P.R. 00985(809)750-4300

For European and other fields:

Matsushita Electric Industrial Co., Ltd.

Osaka, Japan

<http://panasonic.net>